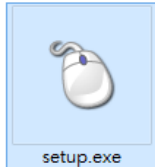


Installation

Step 1: Plug the mouse into the computer's USB Port

Step 2: Windows ® automatically detects the mouse

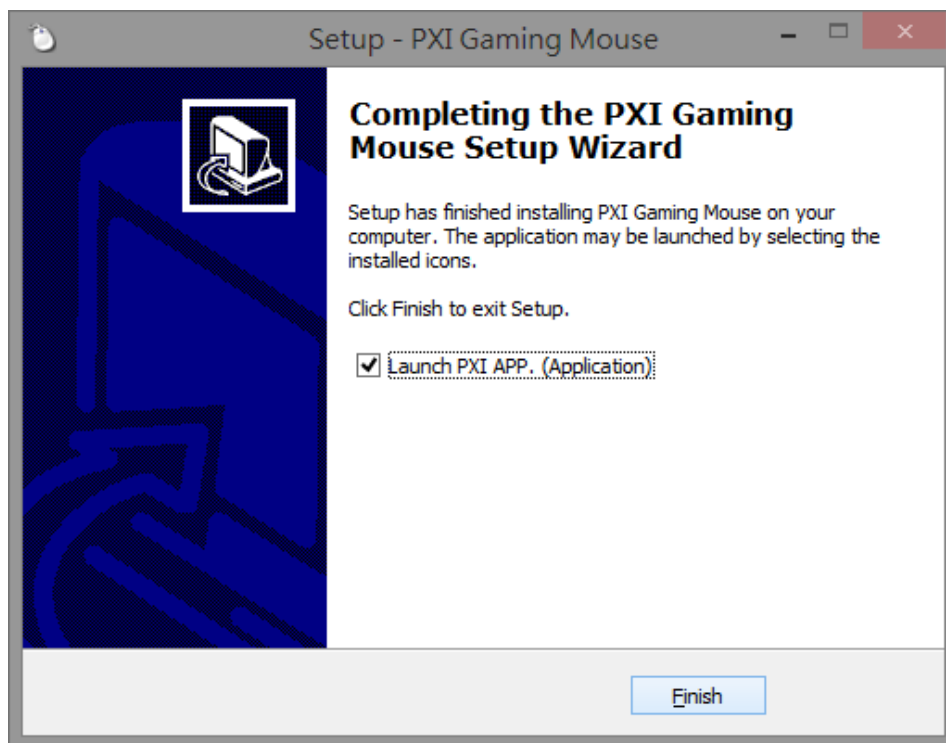
Step 3: Run the "Setup.exe", start the installation program



Step 4: When the program is installed, Windows ® will prompt you through the label is not certified, skip past the next execution

Note: The program will first detect and uninstall the old version, which may take some time, after uninstalling the program, and then repeat steps 3

Step 5: Once the installation is complete click "Finish"



Step 6: Desktop shortcut will appear, click on him to run the program



Program instructions

Button assignments



Mouse button 1 to 7, click on the button you want to change for the selected



Button assignment options:

MACRO	Multimedia	PROFILE	Windows
Left	Right	Universal Scrolling	Button Off
IE Forward	IE Backward	Scroll Up	Scroll Down
Launch Program	FIRE KEY	Windows Key	Launch PXI driver

Macro: Macro management with the use of combined indicators of different keystrokes or commands

Multimedia :

- Open player
- Pre Track
- Next Track
- Play/Pause
- Stop
- Mute
- Volume Up
- Volume Down

Profile :

- Profile cycle
- Profile Up
- Profile Down
- Profile 1
- Profile 2
- Profile 3
- Profile 4
- Profile 5

Windows :

- Calculator
- Email
- Favorites
- Forward
- Backward
- Stop
- My Computer
- Refresh
- Home
- Search

Left: Mouse Left Key

Right: Mouse Right Key ◦ When you use the mouse cursor over a file or folder, you can open the menu

Universal Scrolling: Mouse wheel function ◦ Move the mouse cursor to scroll

Button Off : Button function is switched off

IE Forward : Select the next program or web page

IE Backward : Select Previous program or web page

Scroll Up : Scroll up to see the page currently being read

Scroll Down : Scroll down the page currently being read

Launch Program : The application (*. exe) reassigned to the button to start the specified applicatio °

FIRE KEY : Left click twice function (button not released, will continue to click)

Windows Key : Windows system key

Launch PXI driver : PXI application execution

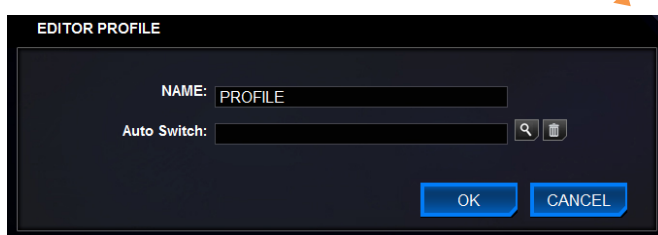
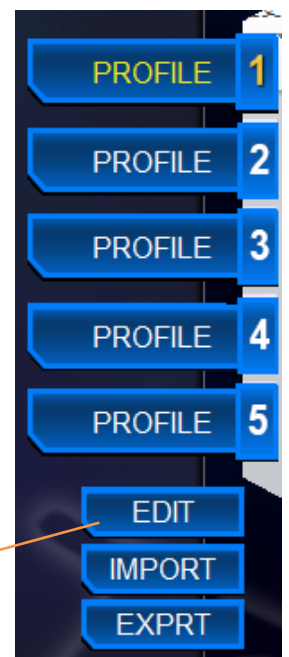
Create / Save Profile

Creating one of the five profiles. You can save all button assignments, macros, color settings or sensitivity settings to a Profile here. As each task is different mouse best suited to each program can allocate a different program / preset special game ° .

Editor

Name: the name can be modified for the current profile, in line with this Profile with the program and games

Auto switch: You can also connect it to the * exe file, enter the path to the program or the relevant game, when you start a program or game corresponding mouse will automatically switch to the relevant Profile.



Import : Can be stored in the configuration from the hard drive, loaded into your default configuration.

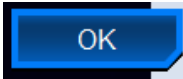
Export : The current configuration can be saved to the hard drive.



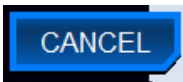
This button, all settings will revert to the default state



This button will save the current configuration has been modified, but does not close the program



This button will save the current configuration has been modified and will close the program



Do not save the modified configuration, and will close the program



Narrowing the program window

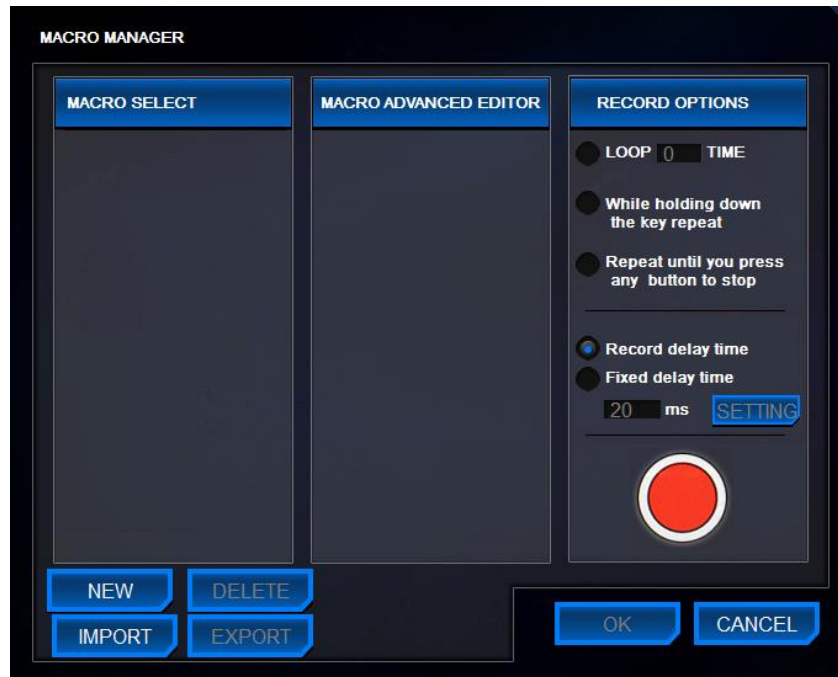


Reference Manual



Do not save the modified configuration, and will close the program

MACRO MANAGER



Create a macro


Step 1 :

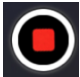
Through a macro you can "New" or "delete" out of a macro. Can also "import" in the presence of the hard macro file, "Export" the presence of the hard macro file file.

Step 2 :

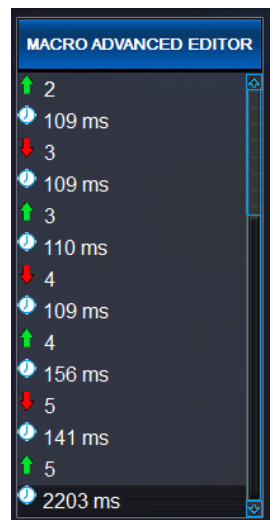
Press "New", you must first create a name for the macro.

Step 3 :

- Now press  Start recording keyboard commands, can be seen in the macro editor in macro recording, and display delay time.

- Upon completion of the macro, press  End Job.

- Also in the recorded macro, the key commands for individual input can be edited, such as before or after the beginning of the macro to insert a new record from the specified key commands, or the insertion of the mouse-related instructions, edit individual delay time, and delete individual keystrokes.

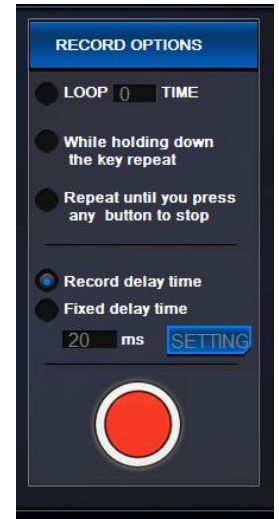


Step 4 :

Recording option in the optional button is pressed once, choose the macro execution times, or hold down the button to release the hold would have been executed or executed when the button is pressed until the next time you press the button to stop

"Record delay time "to record user input gathered in real time delay, or select the" fixed delay time, "so that all instructions in the user wants fixed delay time

"Fixed delay time "can also be modified after all commands in the macro recorder delay time, the time is entered by pressing" Settings "button

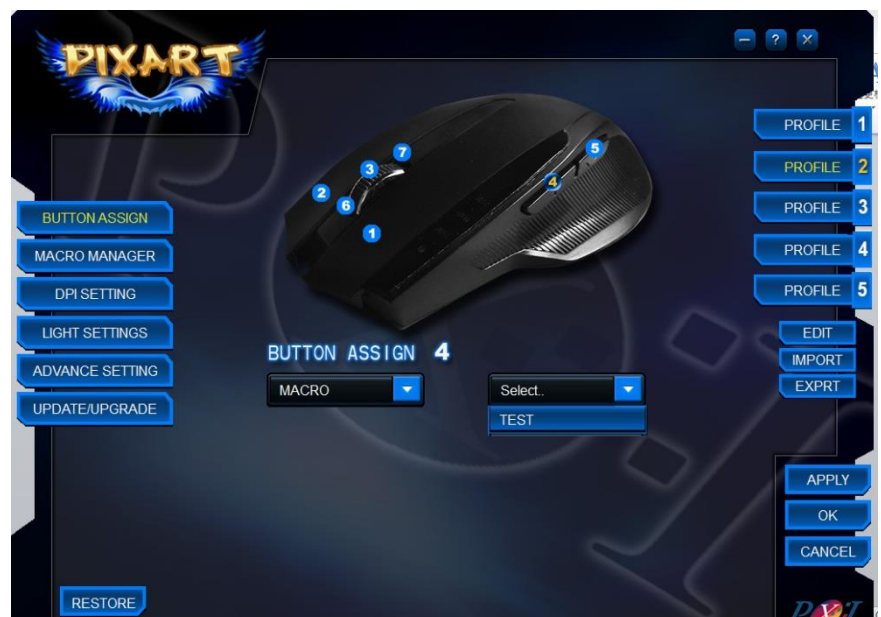


Step 5 :

After confirming the completion of all projects, click OK to complete the creation of macros

Step 6 :

Back to the main screen, select the button assignments in the macro, in another menu on the right to see all the creation of macros, you can click on the desired macro to apply



DPI Setting



DPI divided into four stage :

To go through the stages of change DPI mouse body, each stage can first set the value of DPI
Value 400→800→1200→1600→2000→2400→2800→3200

Note : Max DPI can be set for each order, and can not exceed the max value of the next phase
Min DPI can be set for each order, and can not exceed the min value of the Previous
phase

LIGHT SETTINGS



LIGHT SETTINGS :

ON / OFF, when the lights turn on, you can adjust the lighting respiratory rate

BREATHING :

- When setting the slowest breathing rate, on a par with the lights turned off
- When the breathing frequency setting the fastest time, will be equivalent to the light lit

ADVANCE SETTING



MOUSE POINTER SPEED 1~11 :

By modifying values to keep moving speed indicators produce changes slowest moving closer to a nearly 11 fastest moving

MOUSEWHEEL SCROLL SPEED 1~10 :

By modifying values to keep the number of lines to scroll the mouse wheel, at least close to 1 rolling, rolling long on close to 10

DOUBLE CLICK :

Click here to configure the two reaction speed closer to 1 indicates two mouse click on a longer time interval. 11 shows a close time interval between clicking a particularly short °

UPDATE/UPGRADE



UPDATE : Link to PIXART website

SUPPROT : Link to PIXART website

The following window displays the current message version